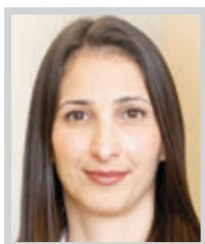


MOST INFLUENTIAL WOMEN LAWYERS

SHARON BEN-SHAHAR MAYER

Principal
Bird, Marella, Boxer, Wolpert, Nessim,
Drooks, Lincenberg & Rhov, P.C.



SHARON Ben-Shahar Mayer's practice focuses on Complex Business Litigation and White Collar Defense. She represents clients nationwide in federal and state

courts, including in the California Court of Appeal and the Ninth Circuit Court of Appeal, as well as in numerous alternative dispute resolution forums. Her representations encompass major areas of complex civil litigation, ranging from intellectual property and legal malpractice to contract disputes, and cases involving multi-million dollar claims of fraud, breach of fiduciary duty, breach of contract, and allegations of securities and Medicare fraud.

Mayer has represented organizations and individuals, including corporate officers and directors, Fortune 500 companies, professional and other partnerships, technology companies and law firms. She has successfully handled complex trials and binding arbitrations, argued and won case dispositive motions and prevailed in both state and federal appeals. She is fluent in Hebrew and licensed to practice in Israel and California. She has successfully represented Israeli-owned companies as well as local subsidiaries and affiliates of Israeli business in various types of business disputes.

MARY T. MCKELVEY

Principal
Polsinelli LLP



MARY McKelvey is a principal of Polsinelli, an AmLaw 100 law firm with over 800 attorneys in 20 offices. She is a highly respected trial attorney who

is influential in every aspect of her career -- in litigating difficult cases for national and global clients, in handling high stakes pro bono cases, in successfully assuming leadership positions at the state and local bar levels, in supporting the next generation of women lawyers, in mentoring at-risk non-lawyer women, and in proactively volunteering in the community.

As a trial attorney, McKelvey handles high-risk, complex mass tort and products liability cases that are large and sometimes so complicated that they take many months and sometimes years to progress through litigation. Her clients are highly visible national and global manufacturing companies that are at risk for claims involving millions of dollars in claimed damages. In addition to trying cases, McKelvey has extensive experience in all stages of litigation and drafting complex pleadings and arguing dispositive motions in both state and federal court.

LISA HELFEND MEYER

Partner
Meyer Olson Lowy & Meyers LLP



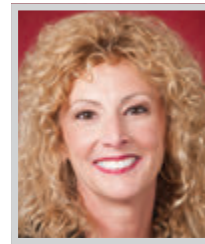
THE trailblazing founding partner of the female-owned family law firm, Meyer, Olson, Lowy & Meyers, LLP (MOLM), Lisa Helfend Meyer is a com-

manding force within the legal profession, a successful businesswoman, and a passionate advocate for the rights of children and parents. With grit, gumption, and a never-give-up attitude, she leads the largest family law firm in Los Angeles. Her clients include members of the entertainment and financial industries, business leaders, professional athletes, and their spouses.

In both her professional and personal life, children's issues are of profound interest to Meyer. Her experience raising an autistic child at a time when understanding of the disorder and resources for families were limited has made Meyer a tireless champion of special needs children and adults. Over the past year and a half, Meyer has had success in numerous high-profile cases ranging from international move-away child custody disputes and divorces involving clients from Iran, Israel and Taiwan to a complex property and support case involving a spouse with extensive private equity and venture capital holdings.

FELICIA R. MEYERS

Partner
Meyer Olson Lowy & Meyers LLP



FELICIA R. Meyers is a partner at Meyer, Olson, Lowy & Meyers, LLP (MOLM). Meyers' work with the firm focuses primarily on litigation, leveraging her extensive

experience as a civil litigator. In family law, Meyers found the ideal outlet for her formidable skills in the courtroom and for her interest in helping people protect their personal assets and custodial rights as they go through what is often the most difficult time in their lives. She has led successful legal efforts related to cutting-edge family law issues such as domestic and international move-away cases, custody disputes involving special needs children, domestic violence, and same-sex relationships.

Over the past year and a half she has been involved in diverse, complex trials in courtrooms across California. In a case presently on appeal that could have an impact on all high-income child support cases, she is representing the wife in a post-Judgment modification of child and spousal support in which the husband's income is largely equity compensation in the form of stock options.

GIBSON DUNN

congratulates its partners

Amy Forbes
Perlette Jura
Debra Wong Yang

and all the women attorneys named to the *Los Angeles Business Journal's*

2017 Most Influential Women Attorneys



Amy Forbes
Land Use and Development



Perlette Jura
Transnational and Commercial Litigation



Debra Wong Wang
White Collar Defense and Investigations

www.gibsondunn.com

- | | | | | |
|--------------|-----------|-------------|---------------|------------------|
| Beijing | Denver | Houston | New York | San Francisco |
| Brussels | Dubai | London | Orange County | São Paulo |
| Century City | Frankfurt | Los Angeles | Palo Alto | Singapore |
| Dallas | Hong Kong | Munich | Paris | Washington, D.C. |